

PrimeGardener<sup>TM</sup>  
SINCE 1998







Since 2011, **PrimeGardener** is being lead by Mr. Gaurav M. Joshi who holds a Bachelor's degree in Agriculture from University of Pune.

Inheriting knowledge from his father, Mr. Joshi and Gaurav's core on-field experience has enabled **PrimeGardener** position itself among one of the most reliable garden designing, developing and maintaining firms in the industry.

**PrimeGardener** is on a mission of "Streamlining thoughts & wishes of its clients about development of their garden; and developing gardens which would support to the Mother Nature".

**PrimeGardener** is a trade name of M/s Swati Enterprises. Swati Enterprise is a Pune based firm, active in the field of Garden Development and Landscaping. The firm was founded by Lt. Mr. Mukund Balkrushna Joshi in the year 1998. Mr. Joshi was a simple man having passion for gardening. He converted his passion into this venture. Swati Enterprises was run by one man then in the year 1998, by the founder Mr. Mukund B. Joshi (The Gardener).

Clients knew Mr. Joshi for Quality and Humility. Mr. Joshi's approach towards gardening was very clear and sorted. He used to streamline thoughts & wishes of his clients using his knowledge, expertise and experience of garden development. He always emphasized on developing gardens which would support the Mother Earth.

With this background of the firm, we take immense pleasure when we say the word '**PrimeGardener**'. It stands for our commitment to Quality and remembers the visionary entrepreneur Lt. Mr Mukund B. Joshi.

**PrimeGardener** is in the business of developing landscape gardens. The core activities of the firm are:  
Designing, Developing and maintaining the landscapes.

We believe that if an individual holds experience and expertise of any field then that individual should assist the other individual(s) who wishes to acquire such experience and expertise for their use. With this approach, when various experts are allocated to undertake minute tasks of a project, the project will always be completed with utmost quality. This is why, we have developed a process through which we build gardens that are envisioned by our esteemed clients.

We have catered to renowned construction houses, architects and individual clients for their prestigious residential and commercial projects in Pune region, Mumbai, Kolhapur, Aurangabad.



# OUR TEAM



**Mr. Harishchandra Temgire**  
M.Com and M.A in Yoga

Research Head in Organic Soil less culture ,  
Growing media and Horticulture plants

Certification done in Exotic Vegetables and  
Organic farming.

Founder of Farm YogikLife and YogikLife  
Food Science.



**Tejashri B. Mathuria**  
BSc (Horti.)

Senior Landscape Designer  
Expert in Landscape designing like Residential,  
Commercial, Farm Houses, Softscape, Hardscape  
designing etc.



**Mr. Shashank Ombase**  
Master's in Project Management..

Business Development Head and project  
management consultancy With 14 yrs of  
Expertise..



## GARDEN DESIGNING

Garden designing service of PrimeGardener is client oriented. Our experienced team helps clients in streamlining their thoughts, wants and wishes about the design. While discussing/understanding client's idea about the design, PrimeGardener adds value by bringing in the necessary changes/alterations.

We consider aspects such as area, utilities, aesthetics, needs, shape & size (of the landscape/property), weather conditions, sunlight, soil type, type of a property, client profile, specific requirements of the client etc. in detail so that the design compliments the client property.

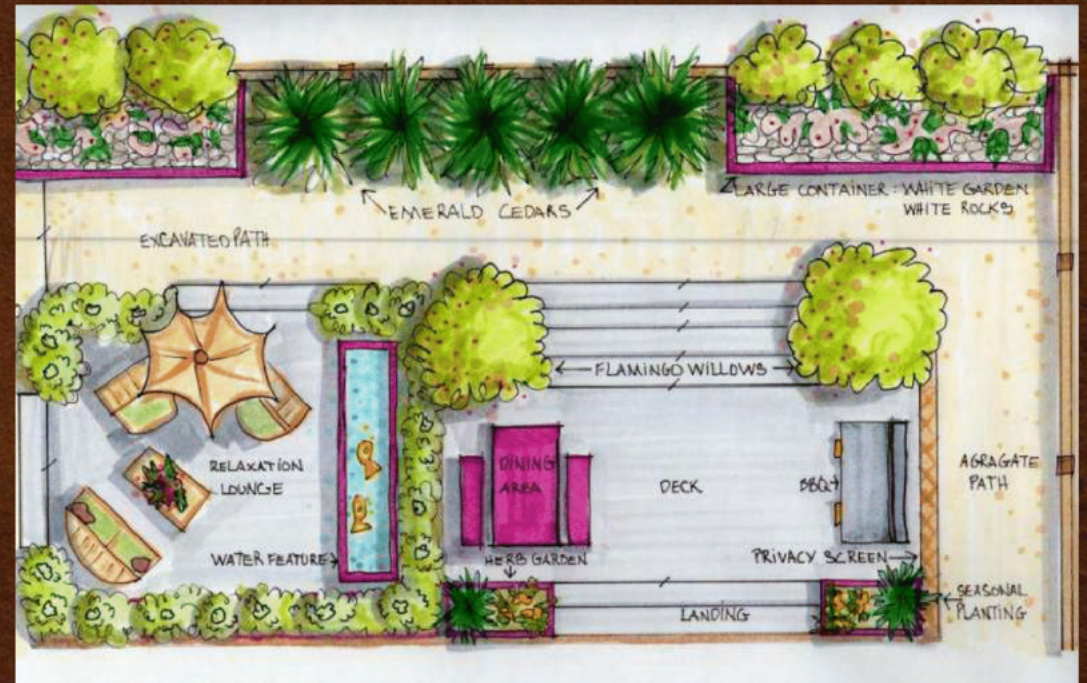
There are two main components in garden design. First is Hardscape and second is Softscape. Hardscape are design elements that are solid and unchanging as the years go by. Softscape are elements that are fluid and changing as they mature. PrimeGardener has mastered the art of balancing these two main components when it comes to garden designing.

### HARDSCAPE

Hardscape elements are the solid hard elements in landscape design that stay as they have been built, for years without change. Some examples of Hardscape are rocks, walkways, retaining walls, paver patios, outdoor kitchens, water features, decks, pergolas and driveways.

### SOFTSCAPE

Softscape is opposite to Hardscaping in nature. It doesn't consist of the parts that are solid and rarely going to change in due course of time. It is the living element of a landscape. Softscape comprises elements such as soil, trees, plants, shrubs, flowers, vines, turf, hedges etc.



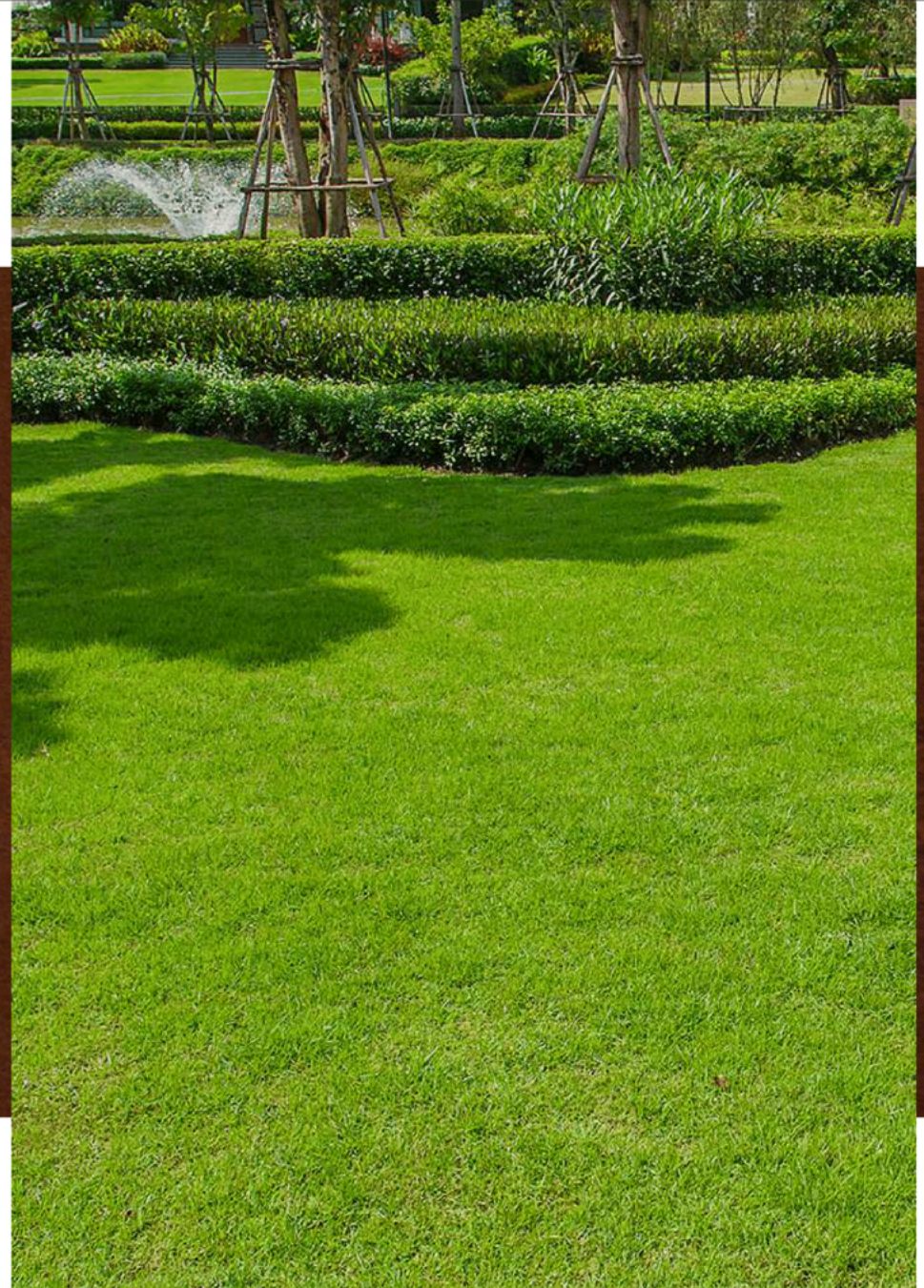
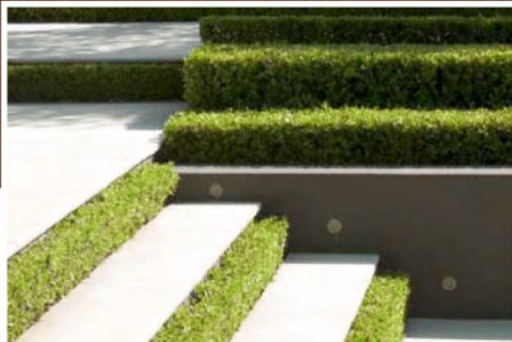


## GARDEN DEVELOPMENT

When it comes to Garden Development; *PrimeGardener* takes care of both the parts of landscaping which are Hardscape & Softscape. We either develop according to the design provided by our client or we develop the garden according to the design developed by *PrimeGardener* for its client. In both the cases, we ensure that the outcome is exact as desired in the plan. Procurement part is also carried out by *PrimeGardener* while addressing landscape development.

Our clients get attractive and competitive offers with the help of *PrimeGardener's* extensive network of suppliers.

Hardscaping of *PrimeGardener* focuses on developing water bodies, pergolas, path-ways, fountains, walkways, retaining walls, paver patios, outdoor kitchens, water features, decks and driveways. Our Softscape covers plantation, lawns, vertical gardens, topiary, hedges/ hedgerow, flower beds, wind breaks, fruit trees, terrace or on roof plantation.



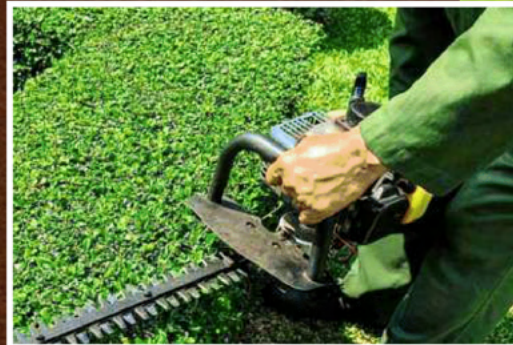


## GARDEN MAINTENANCE

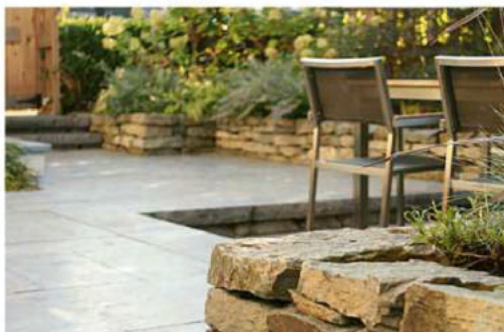
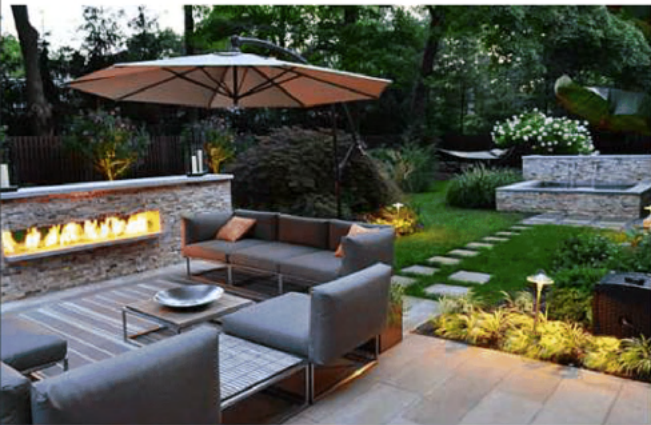
Garden maintenance is a crucial part when it comes to growing plants. We take utmost care while nurturing your plants & trees. Gardeners of *PrimeGardener* are not only trained and equipped with modern machinery & equipment but also possess knowledge, skill and diagnosis ability.

We as an enterprise follow all necessary & statutory rules and regulations set by government authorities before deploying the labor at any of our maintenance sites.

*PrimeGardener* offers tailor made yearly maintenance contracts to its potential clients that assures the complete solution and quality service. We cater to residential as well as commercial projects.







## GARDEN ELEMENTS AND WORKS

We develop various garden elements and works.

### LAWN/TURF

In a long list of Garden Elements and works, first comes Lawn/turf. Lush green carpet for multipurpose use occupies major portion of landscape. There are various types of ground covers used in landscape gardening.

We suggest from the variety of lawns to our clients. For example; American blue grass is used for public gardens with heavy foot fall. For lush carpet look we recommend Taiwan or Korean carpet lawn, commonly known as jumping lawn. In the areas where there is shade and ground level does not receive direct sunlight; we opt for the Paspalum which is also known as buffalo grass. There are few other ground covers/ turf generally used viz. Bermuda grass/ selection-1/ Doob grass, Centipede grass, Kentucky grass, Saint Augustine etc.

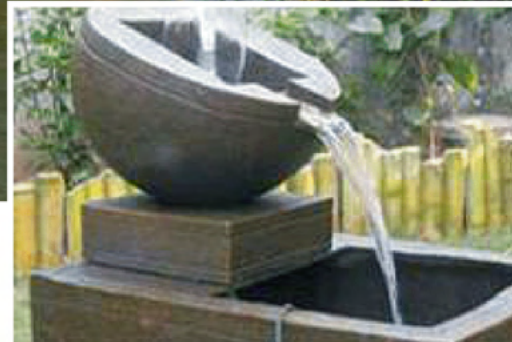


## VERTICAL GARDEN

Vertical or wall garden is an essential aspect of modern landscape garden designs. Clients select this for beautification of bungalow, terrace and compound walls with different thematic coloured plants. These vertical gardens can be developed in semi-shade and full light areas. The vertical gardens are supported by fabrication framework and drip irrigation system. Plants can be supplied with necessary nutrients through these drip irrigation systems. Clients can grow green leafy vegetables in vertical garden. Vertical gardens are easy to maintain.

## WATERFALL AND FOUNTAINS

To please mind by water currents which make soothing noise and create mesmerising environment; we design & construct waterfalls and fountains. We believe that waterfalls and water bodies are the most pleasing aspect of landscape design. Small structures of waterfall and water bodies can be built at your bungalow and terraces. These water features are easy to maintain and operate. This is one of the major garden elements and works.







## GAZEBO AND PERGOLA

A place to sit out, relax and meditate; gazebo and pergolas have truly become 'A must have' feature in every garden design. Whether it is a terrace, bungalow, society or public garden; this feature is essential.

These features can be built with steel, natural wood, cement and ferrocement with varied options available for roof. These structures can be adorned with flowering vines and creepers. Even a bar counter can fit in.

## TOPIARY AND ANIMAL WIRE FRAMES

Guests visiting our clients experience a WOW feeling when they see this aspect of your garden. These features can add uniqueness to your parks and gardens. For our clients, we can create green models of human beings and animals in different sizes and shapes. These green animals and models attract the public at large when placed in garden. We engineer these models in MS bar angles and chicken mesh as per the client's wish or design requirements. This is also one of the major garden elements and works.





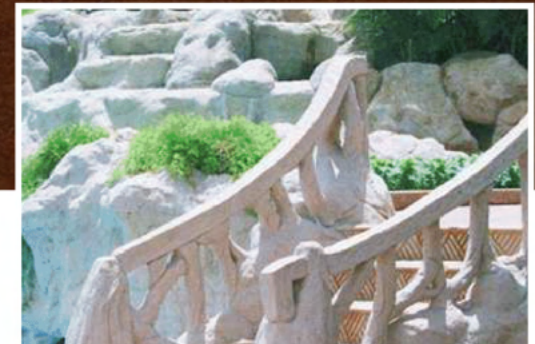


## ROCK GARDEN AND JAPANESE GARDEN

It is a very special kind of garden featuring beauty of rocks. These gardens are built by using stones of different types, sand, pebbles etc. Japanese gardens are based on traditional Buddhist themes and are designed for meditation purpose. It has features as small water ponds, streams, bridges, topiary plants, stone lanterns, water basins, lawn mounds etc. These landscapes helps to nourish mental health, provide space for exercise and leisure walk, acupuncture therapy etc.

## FERROCRETE WORK

We build natural looking log huts, garden furniture, bridges, pathways, ornamental walls, murals, decorative pots of various sizes, sculptures, R.C.C. bamboos, Wooden flooring, wall cladding, bamboo fencing, animal shades and Agro related fabrication for our clients.





## IRRIGATION SYSTEMS

The regular irrigation or watering is essential for plants and lawn grass. We design irrigation layout for optimum utilization of available water. Drip and Sprinklers are basic techniques used. We install irrigation system for effective coverage, low weed growth, minimising labour and to achieve easiness in application of fertilisers. This reduces garden maintenance cost for our clients.

## GARDEN ELECTRIFICATION

When the highlighters are installed for plants, they shine during nights. This light combinations have effective role in enriching garden beauty during night hours. Most of us get time to troll in gardens during evening times only so we specifically focus on making our gardens more beautiful during night hours. Apart from lights; music systems, garden poles, water bodies and fountains also need electrification. Yes, don't ignore this and build the mood of your evenings as desired; peaceful, cheerful or romantic.







## TREE PLANTATION AND SHIFTING PLANTS

Tree plantation is done for various purposes. It is used to create beautiful blossoming look. We can create green canopies, plant trees which create shade. Avenue plantation, road side & divider plantation can also be taken care of.

We can structure the plantation in a way that it creates wind breaks. Plantation is also done for fruits and timber purposes. This activity adds to the valuation of the property. It turns out to be supportive to ecology and temperature control along with the increased levels of Oxygen in the area.

Plantation is also a mandatory requirement for obtaining garden NOC by Municipal corporations in process of completion certificate of any construction project. In Pune region there about 170 plant varieties listed by the Municipal corporation valid for Garden NOC certification. Get in touch with us to know more on this.

We select plant variety very carefully taking in to account the growth habits, availability of the area, weather conditions and maintenance required after plantation. Nowadays, there are requirement of shifting big & well grown plants from one place to other. We also carry out this activity with excavation machinery and trained men.



## CLIENTELE

We don't just cater to big corporate houses but also have catered to many individuals. Your every wish is important to us, be it a graceful garden or wish for a single tree /plant.

### Pune

Deepak Fertilizers And Petrochemicals  
 Hari Krupa Builders  
 Sanjay Runwal (Runwal Group)  
 Goel Ganga Developers  
 Kolte Patil Developers  
 Mr. Satish Bora  
 Satyam Developers  
 Shiv Developers  
 Supreme Universal  
 Premium Transmission Ltd.  
 Dreams Group  
 Sai Prasad Food  
 Ascent Hotels Pvt Ltd  
 Ganesh Developers

### Jaysingpur

Sanjay Ghodawat Group

### Kolhapur

Sunil Mahajan (Sai Prasad Group)

### Jalna

Mr. Satish Arawal

### Beed

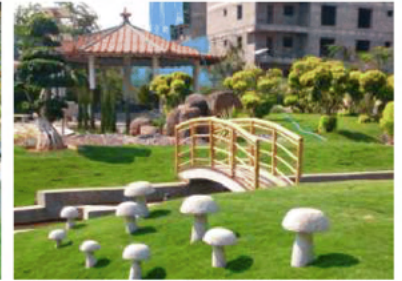
Mr. Santosh Shirsath

### Aurangabad

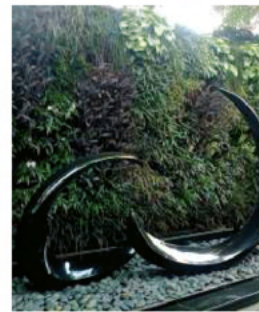
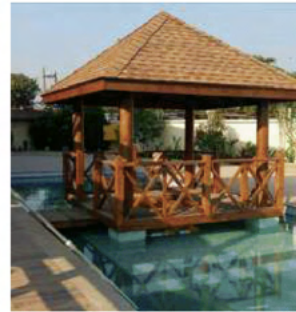
Mr. Pandit  
 Anand Industries



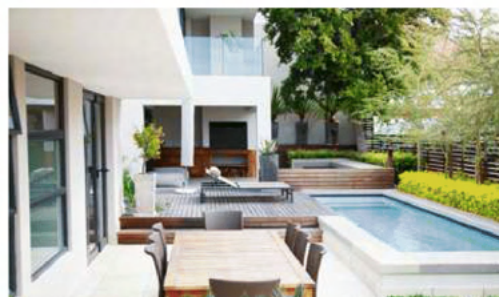
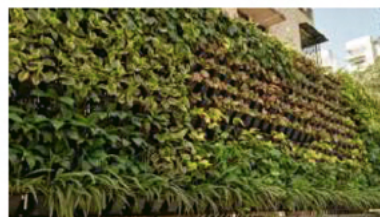




Our work profile reflects a range of projects designed, developed and maintained both for commercial spaces as well as for individuals.









PrimeGardener<sup>TM</sup>  
SINCE 1998

Regd. Address: Primegardener  
Biz Integrated, C-1, F wing, 5th Floor, KK Market,  
Dhnakawadi, Pune - 411043

OFFICE: 985 069 4656 | CUSTOMER SERVICE: 888 897 4656 | E: [info@primegardener.com](mailto:info@primegardener.com)

[www.primgardener.com](http://www.primgardener.com)